



ALSET[®]
LED LIGHTING

A Division of NuWave, LLC



2018 CATALOG



About

NuWave® has changed the way we live. NuWave shot into the limelight with its flagship product: the NuWave Oven – a pioneering countertop oven that combines infrared, conduction, and convection heat to offer easy and healthy cooking. Like every other NuWave product, ALSET LED Lighting has been designed to improve lives and help save the environment. A result of the founder's vision for energy-efficient and smart lighting technologies, ALSET LED Lighting was formed in 2012.

Our Mission

Live Well For Less

Our mission is to deliver our very best and create a range of products that are energy efficient and environment-friendly. We are passionate about health, safety, and the environment, and this is reflected in every eco-friendly product that we create.

Our work is driven by the philosophies of:

- **Safety** – Safety is paramount at NuWave. Our products are engineered for security and peace of mind. Each product has multiple safety redundancies built into the design and engineering to ensure that they are safer than most other similar products.
- **Quality** – To offer innovative design and advanced technology to ensure the best performance at the best price.
- **Value** – To combine efficiency and durability to offer one of the fastest ROIs in the industry.
- **Environmental Awareness** – NuWave, LLC lives by the “green” philosophy. Materials are carefully selected to ensure that each product is safe for the environment. We believe in producing environmentally conscious, chemical-free products that are both efficient and affordable.

Our History

NuWave, LLC is the proud maker of ALSET LED Lighting. Its predecessor, IBC-Hearthware, was founded in 1993 and ever since has been a leader in innovative components, supplying components as OEM household appliance manufacturers. We specialize in developing new products for large corporations such as Mabe, Electrolux, General Electric, Daewoo, and Whirlpool. With this background, combined with strong technicians and advanced product-testing machinery, we have created a strong Quality Control and product management system. In 2012, we began to implement this knowledge into producing innovative LED luminaires and lamps.

For 25 years, we have focused our goals around delivering high-quality products to satisfied customers. Our 400,000-square-foot warehouse and distribution center, located next to our company headquarters in Libertyville, IL, holds our stocked items for purchases and quick deliveries. We pride ourselves on same-day processing on standard orders.

Our Promise

NuWave's goal to our customers is to maintain top-notch customer satisfaction. That is why we developed an online customer portal on our website, which allows partners to track order status, inventory levels, and new product information. We also generate lighting layouts with a two-day turnaround time so the customer may see how well the fixture performs for their applications. Our warranty is backed by a company with over \$10MM in annual sales, so in the unlikely event of a problem you know we will stand behind the product.

Our Future

NuWave has a world-class research and development team that is focused on developing innovative solutions in LED lighting. With our passion and devotion to advancements in LED lighting, our team has earned the respect of lighting distributors, architects, designers, engineers, and related professionals worldwide while developing innovative products that will help revolutionize the way we light our world.

LED Strips/Wraps

TC = Tandem with cords or conduit TS = Tandem with Seamless Connector (end to end)



Reference: 61227

TPAL -TS- Linkable



Model #	Ref#	Lumens	LmW	Color Temp (°K)	Watt	Input Voltage
TPAL24-2L-40K-UL-DM-TS	61244	2330	116	4000	20	120-277 V
TPAL48-4L-35K-UL-TS	61511	4308	119	3500	36	120-277 V
TPAL48-4L-40K-UL-TS	61226	4380	121	4000	36	120-277 V
TPAL48-4L-40K-UL-DM-TS	61246	4390	121	4000	36	120-277 V
TPAL48-4L-50K-UL-TS	61140	4524	125	5000	36	120-277 V
TPAL48-5L-35K-UL-TS	61541	5214	115	3500	45	120-277 V
TPAL48-5L-35K-UL-OC-TS	61543	5214	115	3500	45	120-277 V
TPAL48-5L-35K-UL-EM-TS	61544	4989	117	3500	43	120-277 V
TPAL48-5L-35K-UL-DM-TS	61542	5214	115	3500	45	120-277 V
TPAL48-5L-40K-UL-TS	61227	4989	127	4000	43	120-277 V
TPAL48-5L-40K-UL-TS	61228	5476	122	5000	45	120-277 V
TPAL96-8L-35K-UL-TS	61519	8677	128	3500	68	120-277 V
TPAL96-8L-40K-UL-TS	61253	8766	129	4000	68	120-277 V
TPAL96-8L-40K-UL-DM-TS	61254	8766	129	4000	68	120-277 V
TPAL96-8L-50K-UL-TS	61269	8944	130	5000	69	120-277 V

Ex. (TPAL24) 2' Strip – (2L) 2000 Lumens – (40K) 4,000 Kelvin – (UL) Universal Voltage 120-277V

- 4000K/5000K Stocked • Occupancy Sensor Available • Dimming Available *Emergency Backup Available
- Can link up to 400W on 120V and 1000W on 277V • Fixture Includes Connectors and Hanging Brackets

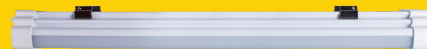
TPAL -TC – Conduit/cord connected



Model #	Ref#	Lumens	LmW	Color Temp (°K)	Watt	Input Voltage
TPAL24-2L-35K-UL-TC	61508	2291	117	3500	20	120-277 V
TPAL24-2L-40K-UL-TC	61275	2330	119	4000	20	120-277 V
TPAL24-2L-40K-UL-OC-TC	61277	2330	119	4000	20	120-277 V
TPAL24-2L-40K-UL-OC-ST-TC	61628	2330	119	4000	20	120-277 V
TPAL24-2L-50K-UL-TC	61293	2407	124	5000	20	120-277 V
TPAL24-2L-50K-UL-OC-TC	61295	2407	124	5000	20	120-277 V
TPAL24-2L-50K-UL-OC-ST-TC	61631	2407	124	5000	20	120-277 V
TPAL48-4L-35K-UL-TC	61510	4308	119	3500	36	120-277 V
TPAL48-4L-35K-UL-OC-TC	61509	4308	119	3500	36	120-277 V
TPAL48-4L-40K-UL-TC	61278	4380	121	4000	36	120-277 V

(Continued on next Page)

LED Strips/Wraps



TC = Tandem with cords or conduit TS = Tandem with Seamless Connector (end to end)

Reference: 61299

Model #	Ref#	Lumens	LmW	Color Temp (°K)	Watt	Input Voltage
TPAL48-4L-40K-UL-OC-TC	61280	4380	121	4000	36	120-277 V
TPAL48-4L-50K-UL-TC	61296	4524	125	5000	36	120-277 V
TPAL48-4L-50K-UL-OC-TC	61298	4524	126	5000	36	120-277 V
TPAL48-5L-35K-UL-OC-TC	61513	5214	115	3500	45	120-277 V
TPAL48-5L-35K-UL-OC-EM-TC	61512	4308	119	3500	45	120-277 V
TPAL48-5L-40K-UL-TC	61281	5301	117	4000	45	120-277 V
TPAL48-5L-40K-UL-EM-TC	61284	5301	117	4000	45	120-277 V
TPAL48-5L-40K-UL-OC-TC	61283	5301	117	4000	45	120-277 V
TPAL48-5L-40K-UL-OC-EM-ST-TC	61629	4989	117	4000	43	120-277 V
TPAL48-5L-50K-UL-TC	61299	5475	122	5000	45	120-277 V
TPAL48-5L-50K-UL-DM-TC	61300	5479	121	5000	45	120-277 V
TPAL48-5L-50K-UL-EM-TC	61302	5308	121	5000	44	120-277 V
TPAL48-5L-50K-UL-OC-EM-ST-TC	60632	5476	122	5000	45	120-277 V
TPAL96-8L-35K-UL-EM-TC	61516	8677	128	3500	68	120-277 V
TPAL96-8L-35K-UL-OC-TC	61517	8677	128	3500	68	120-277 V
TPAL96-8L-35K-UL-TC	61518	8677	128	3500	68	120-277 V
TPAL96-8L-40K-UL-EM-TC	61290	7895	115	4000	69	120-277 V
TPAL96-8L-40K-UL-OC-EM-ST-TC	61630	7895	115	4000	69	120-277 V
TPAL96-8L-40K-UL-OC-TC	61289	7895	115	4000	69	120-277 V
TPAL96-8L-40K-UL-TC	61287	8766	129	4000	67	120-277 V
TPAL96-8L-50K-UL-EM-TC	61308	8399	119	5000	71	120-277 V
TPAL96-8L-50K-UL-OC-EM-ST-TC	61633	8944	119	5000	69	120-277 V
TPAL96-8L-50K-UL-OC-TC	61307	8399	119	5000	71	120-277 V
TPAL96-8L-50K-UL-TC	61305	8399	119	5000	71	120-277 V
*RMSTOC- Occupancy sensor remote	61696					
*RMSTEM- Emergency remote	61324					

Features

- Replace outdated, inefficient strip lighting with low-wattage, high-lumen solutions
- Compact size with flexible mounting: wall, ceiling, and suspended
- Available 2', 4', and 8' lengths
- Workable voltage: 90-305V
- Full range of options: occupancy sensor, emergency backup, tandem wiring, and dimming
- Frosted acrylic lens included
- IP65 rated with PG9 connector included (TC model)
- No loss in lumen output in cold environments
- Compatible with 0-10V analog dimming system
- 5-year warranty
- CRI >80
- Chain hanging assembly and mounting kit included
- Available in the following color temperatures: 3000K, 3500K, (4000K, 5000K Stocked)

LED Strips/Wraps

TC = Tandem with cords or conduit TS = Tandem with Seamless Connector (end to end)



Reference: 61299



Model	L(inches)		L2 (Inches)	W (Inches)	H (Inches)
	TS	TC	TS / TC	TS / TC	TS / TC
TPAL24	23.6	25.6	21.3	3.7	2.4
TPAL48	47.2	49.2	44.9	3.7	2.4
TPAL96	94.5	96.5	92.1	3.7	2.4

Options

- Emergency battery backup (remote required)
- Occupancy sensor
- 0-10V Dimming
- 6' Cord
- Stairwell Model (ST) dims does not turn off
- Factory preset settings

Applications

- Retail stores
- Industrial
- Warehouses
- Residential
- Vanity Lighting
- Shelving
- Under cabinets

Strip Light Series Stairwell

(Dimming option does not turn off)

Model #	Ref#	Lumens	LmW	Color Temp(°K)	Watt	Input Voltage
TPAL24-2L-40K-UL-OC-ST-TC	61628	2330	119	4000	20	120-277 V
TPAL24-2L-50K-UL-OC-ST-TC	61631	2407	124	5000	20	120-277 V
TPAL48-5L-40K-UL-OC-EM-ST-TC	61629	4989	117	4000	43	120-277 V
TPAL48-5L-50K-UL-OC-EM-ST-TC	60632	5476	122	5000	45	120-277 V
TPAL96-8L-40K-UL-OC-EM-ST-TC	61630	7895	115	4000	69	120-277 V
TPAL96-8L-50K-UL-OC-EM-ST-TC	61633	8944	119	5000	69	120-277 V
RMSTEM Remote	61324					

Features

- Wide Beam Angle
- Built-in aluminum heat sink with 94 V0 Fire-rated PC housing
- IP65: Integral design and fully compact structure
- No glass
- End knock out permits conduit connection or can be cord-connected. Alternate power connection through back also available.
- Mounting/hanging kit included for wall ceiling or suspended mount
- Emergency backup, occupancy sensor, 0-10 V Dimming
- Sensor hold time 5 minutes, then dims to 20% (does not turn off)
- Input Voltage: 120 - 277V
- Power: 25W - 70W
- Frequency: 50 / 60 Hz
- Lumen Efficacy: 120 lumens per watt
- Operating Temperature: -25°C to +40°C
- Power Factor: >0.9
- Beam Angle: 270°
- THD: <18%
- Lifespan: 50,000 hours
- DLC Standard
- 5-year warranty
- Color temperature: 40K - 50K in stock
- OC: Occupancy sensor
- EM: Emergency backup, meets UL924 (EM remote, #61324, required for testing, one per location. Emergency operating temperature -13°F to +104°F)
- Output in EM Mode:
 - TPAL-5L: 6 Watt, 744 Lumens
 - TPAL-8L: 6 Watt, 760 Lumens

Strip Light Series - CCT Selectable



Reference: 61758

**One fixture can change color temperature with the switch of a button.
Remote required. 7 color options.**

TS	Model #	Ref#	Lumens	Watt
24" Strip TS	TPAL24-2L-XXK-UL-DM-CT-TS	61758	4181	20
48" Strip TS	TPAL48-4L-XXK-UL-DM-CT-TS	61760	4680	36
48" Strip TS	TPAL48-5L-XXK-UL-DM-CT-TS	61762	5850	45
96" Strip TS	TPAL96-8L-XXK-UL-DM-CT-TS	61764	9100	70
TS Cord	TS Cord with special end	61331		
TC				
24" Strip TC	TPAL24-2L-XXK-UL-DM-CT-TC	61759	2600	20
48" Strip TC	TPAL48-4L-XXK-UL-DM-CT-TC	61761	4680	36
48" Strip TC	TPAL48-5L-XXK-UL-DM-CT-TC	61763	5850	45
96" Strip TC	TPAL96-8L-XXK-UL-DM-CT-TC	61657	9100	70
TS Cord	TS Cord w/NEMA 1-15 plug (120v)	61311		
REMOTE				
REMOTE	RMCCT	61766		

CT= CCT Selectable - TS= Tandem Seamless - TC= Tandem Cord/Conduit - DM= Dimmer

Features	Applications
<ul style="list-style-type: none"> • CT = CCT Selectable : 3000K, 3500K, 400K=0K, 4500K, 5000K, 6000K, and 6500K • DM = Dimmable Driver • Remote Required (61766) 	<ul style="list-style-type: none"> • Healthcare facilities • Hospitality • Schools

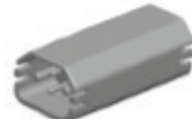
Included with each fixture:



Hanging Kits



PG9 Connector



Connector for seamless connection



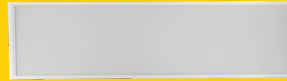
Mounting Bracket



Remote - Required

Flat Panel

Reference: 60739



Model #	Ref#	Lumens	LmW	Color Temp(°K)	Watt	Input Voltage
FPT14-4L-50K-UL	60735	4181	110	5000	38	120-277 V
FPT22-4L-40K-UL-DM-B	60862	3946	105	4000	38	120-277 V
FPT22-4L-50K-UL-DM-B	60737	4070	109	5000	38	120-277 V
FPT22-5L-50K-UL	60738	5409	115	5000	47	120-277 V
FPT24-5L-40K-UL-DM-B	60863	5533	115	4000	48	120-277 V
FPT24-5L-40K-UL-DM-B-EM	60861	5533	115	4000	48	120-277 V
FPT24-5L-50K-UL-DM-B	60739	5843	120	5000	48	120-277 V
FPT24-6L-50K-UL	60740	6786	114	5000	59	120-277 V
CF-22 Frame Kit	61655					
CF-24 Frame Kit	61657					

FPT14 - 1' x 4' • FPT22 - 2' x 2' • FPT24 - 2' x 4' • Ex. (FPT24) 2' x 4' Troffer - (4L) 4,000 Lumens - (50K) 5,000 Kelvin - (UL) Universal Voltage 120-277V

Features	Applications
<ul style="list-style-type: none"> • L70 >50,000 hours • Power factor: ≥0.9 • Instant on to full brightness • CRI >80 • 0-10V DC dimming standard • LM 79/80 and TM-21 reports available 	<ul style="list-style-type: none"> • Retail stores • Healthcare facilities • Offices • Workshops • Indoor area lighting • Schools

Troffers

Limited Color Temperatures Available

Reference: 51118



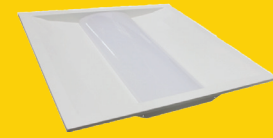
Model #	Ref#	Lumens	LmW	Color Temp(°K)	Watt	Input Voltage
TR14-4L-35K-UL	51200	3538	101	3500	35	120-277 V
TR14-4L-40K-UL	51201	3684	105	4000	35	120-277 V
TR22-4L-35K-UL	51012	3609	103	3500	36	120-277 V
TR22-4L-40K-UL	51013	3787	108	4000	36	120-277 V
TR24-5L-35K-UL	51118	5155	103	3500	50	120-277 V
TR24-8L-50K-UL	51123	8679	119	5000	73	120-277 V
MTR22A-6L-40K-UL	51003	5592	112	4000	50	120-277 V
MTR24-6L-40K-UL	51102	5715	115	4000	50	120-277 V
MTR24A-6L-40K-UL	51103	5736	120	4000	48	120-277 V

TR14 - 1' x 4' • TR22 - 2' x 2' • TR24 - 2' x 4' • Ex. (TR24) 2' x 4' Troffer - (8L) 8,000 Lumens - (40K) 4,000 Kelvin - (UL) Universal Voltage 120-277V

Features	Applications
<ul style="list-style-type: none"> • L70 >60,000 hours • Frosted diffuser to reduce glare • Power factor: ≥0.99 • CRI >80 • 0-10V DC dimming standard • LM 79/80 and TM-21 reports available • Operating temp: -40°C to +60°C / -40°F to +140°F • A - A12 prismatic lens 	<ul style="list-style-type: none"> • Dimensions (TR14): 47.7" x 11.7" x 4.3" • Dimensions (TR22): 23.7" x 23.7" x 4.3" • Dimensions (TR24): 47.7" x 23.7" x 4.3" • UL, DLC, RoHS, and FCC certified • Rated for damp locations • Lightweight for easy installation • 7-year warranty

Architectural Troffer

Reference: 60732



Model #	Ref#	Lumens	LmW	Color Temp(°K)	Watt	Input Voltage
TRK22-4L-40K-UL	61350	4272	138	4000	31	120-277 V
TRK22-4L-50K-UL	60731	4316	141	5000	31	120-277 V
TRK22-5L-40K-UL	61351	5145	134	4000	39	120-277 V
TRK22-5L-50K-UL	60732	5450	144	5000	38	120-277 V
TRK24-5L-40K-UL	61352	5482	142	4000	39	120-277 V
TRK24-5L-50K-UL	60733	5526	144	5000	39	120-277 V
TRK24-7L-40K-UL	61353	6549	140	4000	47	120-277 V
TRK24-7L-50K-UL	60734	6942	148	5000	47	120-277 V

• TRK22 - 2' x 2' • TRK24 - 2' x 4'
 Ex. (TRK24) 2' x 4' Troffer - (7L) 7,000 Lumens - (40K) 4,000 Kelvin - (UL) Universal Voltage 120-277V

Features	Applications
<ul style="list-style-type: none"> • L70 >60,000 hours • Frosted diffuser to reduce glare • Power factor: ≥0.99 • Instant on to full brightness • CRI >80 • 0-10V DC dimming standard • LM 79/80 and TM-21 reports available 	<ul style="list-style-type: none"> • Operating temp: -40°C to +60°C / -40°F to +140°F • Input voltage: 120-277V • Workable voltage: 90-305V • ETL, DLC Premium, RoHS, and FCC certified • Rated for damp locations • Lightweight for easy installation • Lower maintenance costs
	<ul style="list-style-type: none"> • Retail stores • Healthcare facilities • Offices • Workshops • Indoor area lighting • Schools

CLAW Retrofit Solution

Reference: 60761



Model #	Ref#	Lumens	LmW	Color Temp(°K)	Watt	Input Voltage
STRK14-4L-40K-UL	60759	3300	0	4000	25	120-277 V
STRK14-4L-50K-UL	60869	3300	0	5000	25	120-277 V
STRK22-4L-40K-UL	60761	4272	138	4000	31	120-277 V
STRK22-4L-50K-UL	60871	3935	131	5000	30	120-277 V
STRK22-5L-40K-UL	60762	4827	134	4000	36	120-277 V
STRK22-5L-50K-UL	60872	5557	138	5000	40	120-277 V
STRK24-5L-40K-UL	60763	5557	138	4000	40	120-277 V
STRK24-5L-50K-UL	60873	5629	140	5000	40	120-277 V
STRK24-6L-50K-UL	60874	6674	148	5000	45	120-277 V

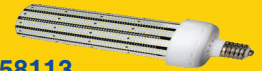
• STRK22 - 2' x 2' • STRK24 - 2' x 4' • Ex. (STRK24) 2' x 4' Troffer - (6L) 6,000 Lumens - (40K) 4000 Kelvin - (UL) Universal Voltage 120-277V

Features	Applications
<ul style="list-style-type: none"> • L70 >60,000 hours • Uses magnets to allow flexibility during installation • Driver will operate 1, 2, or 3 strips 	<ul style="list-style-type: none"> • Operating temp: -40°C to +60°C / -40°F to +140°F • 5-year warranty • Workable voltage: 90-305V or 180-528V
	<ul style="list-style-type: none"> • Offices • Retail stores • Signage

Ornamental Medium/Mogul Base Lamps

Retrofit Solution

Reference: 58113



Model #	Ref#	Lumens	LmW	Color Temp(°K)	Watt	Input Voltage
COS-2L-40K-UL-E26	61322	3372	111	4000	31	120-277 V
COS-3L-40K-UL-E39	60579	4524	114	4000	40	120-277 V
COS-3L-50K-UL-E26	61233	4524	114	5000	40	120-277 V
COS-4L-40K-UL-E39	60580	6473	110	4000	59	120-277 V
COS-6L-40K-UL-E39	60581	9298	116	4000	80	120-277 V
COS-6L-50K-UL-E39	61193	9298	115	5000	80	120-277 V
COS-8L-40K-UL-E39	60582	11462	114	4000	100	120-277 V
COS-8L-50K-UL-E39	61196	11462	114	5000	100	120-277 V
COS-10L-40K-UL-E39	60583	13305	114	4000	116	120-277 V
COS-11L-40K-UL-E39	60584	17592	119	4000	148	120-277 V

Ex. (CO) Ornamental Lamp - (16L) 16,000 Lumens - (50K) 5,000 Kelvin - (UL) Universal Voltage 120-277V - (E40) Base Type

Features	Applications
<ul style="list-style-type: none"> • L70 >60,000 hours • Power factor: 0.9 • Instant to full on brightness • Wide light distribution • CRI >80 • Operating temp: -40°C to +60°C / -40°F to +140°F • Input voltage: 120-277V • Dimensions (45W): 3.65" x 10.79" • Dimensions (80W): 5.51" x 11.34" 	<ul style="list-style-type: none"> • Indoor/outdoor lighting • Warehouses • Street lights • Bollards • HID lamps retrofit
<ul style="list-style-type: none"> • Dimensions (125W): 5.51" x 13.70" • UL, DLC, RoHS, and FCC certified • Fits most standard acorn-style exterior fixtures • E40 mogul base is standard; E26 also available • 5-year warranty 	

Downlight Retrofit

Retrofit Solution



Reference: 51612 (4"-6")



Reference: 51616 (8")

Model #	Ref#	Lumens	LmW	Color Temp (°K)	Watt	Input Voltage
RF4-6L-27K-ST	51504	609	103	2700	6	120-277 V
RF4-6L-35K-ST	51505	627	108	3500	6	120-277 V
RF6-6L-27K-ST	51612	610	104	2700	6	120-277 V
RF6-6L-35K-ST	51613	654	112	3500	6	120-277 V
RF6-10L-27K-ST	51614	1002	106	2700	9	120-277 V
RF6-10L-35K-ST	51615	1047	111	3500	9	120-277 V
RF6-14L-27K-ST	51616	1407	108	2700	13	120-277 V
RF6-14L-35K-ST	51617	1463	113	3500	13	120-277 V
RF8-22L-30K-UL	51675	2284	104	3000	21	120-277 V
RF8-22L-35K-UL	61327	2292	106	3500	22	120-277 V
RF8-22L-40K-UL	51676	2326	111	4000	21	120-277 V
RF8-30L-30K-UL	51677	3233	115	3000	29	120-277 V
RF8-30L-40K-UL	51678	3288	113	4000	29	120-277 V
RF8-40L-30K-UL	51679	4627	113	3000	38	120-277 V
RF8-40L-40K-UL	51680	4712	112	4000	38	120-277 V
RF10-22L-30K-UL	51681	2284	109	3000	21	120-277 V
RF10-22L-40K-UL	51682	2326	111	4000	21	120-277 V
RF10-30L-30K-UL	51683	3233	113	3000	29	120-277 V
RF10-30L-40K-UL	51684	3288	115	4000	29	120-277 V
RF10-40L-30K-UL	51685	4627	121	3000	38	120-277 V
RF10-40L-40K-UL	51686	4712	124	4000	38	120-277 V

*Ballast must be removed to allow direct 100-277V connection

Ex. (RF6) 6" - (14L) 1,400 Lumens - (27K) 2,700 Kelvin - (ST) Standard Voltage 120V or (UL) Universal Voltage 120-277V

Features

- L70 >60,000 hours
- Power factor: ≥0.95
- Instant on to full brightness
- CRI >80
- TRIAC dimming standard (4" and 6")
- 0-10V DC dimming standard (Only 8"/10")
- LM 79/80 and TM-21 reports available
- Input voltage: 120V (Only for 4" and 6" retrofits)
- Input voltage: 120-277V (Only for 8"/10" retrofits)
- Operating temp: -40°C to +45°C / -40°F to +113°F

- Dimensions (6"): 7.56" x 2.42" (3.43 aperture)
- Dimensions (8"): 11.2" x 4.92"
- UL, Energy Star, RoHS, and FCC certified
- Rated for damp locations (4", 6")
- Rated for wet locations (8" - 10")
- Superior heat management
- See compatible dimmer list at www.alsetled.com
- Includes E26 adapter (only for 4" and 6" retrofits)
- 8" and 10" models may be used in new construction
- 7-year warranty
- Dimensions (4"): 5.20" x 2.17" (4.80 aperture)

Applications

- Church ceilings
- Lobbies
- Atriums
- Kitchens
- Bathrooms
- Basements
- Other damp locations

Lowbays/Highbays



Reference: 61685

Model #	Ref#	Lumens	LmW	Color Temp (°K)	Watt	HID Equivalent
LB-8L-35K-UL	60532	9490	130	3500	73	175 W
LB-8L-30K-UL	60531	9366	128	3000	73	175 W
LB-8L-40K-UL	52075	9282	125	4000	74	175 W
LB-8L-50K-UL	52076	9282	128	5000	74	175 W
LB-11L-30K-UL	60534	12615	126	3000	100	250 W
LB-11L-35K-UL	60535	12701	127	3500	100	250 W
LB-11L-40K-UL	52077	12787	127	4000	100	250 W
LB-11L-50K-UL	52078	12959	130	5000	100	250 W
HB-18L-30K-UL	60546	16801	123	3000	136	400 W
HB-18L-30K-UL-MW	61683	17575	130	3000	135	400 W
HB-18L-40K-UL	52000	17848	124	4000	144	400 W
HB-18L-40K-UL-MW	61684	18029	133	4000	135	400 W
HB-18L-40K-UH	52310	18063	125	4000	144	400 W
HB-18L-40K-UH-IND	60554	18062	126	4000	141	400 W
HB-18L-50K-UL	52001	18332	126	5000	146	400 W
HB-18L-50K-UL-MW	61685	18256	135	5000	135	400 W
HB-18L-50K-UH	52311	18120	124	5000	146	400 W
HB-18L-50K-UH-IND	60555	18397	130	5000	142	400 W
HBS-18L-40K-UL	61111	16525	121	4000	137	400 W
HBS-18L-50K-UL	60474	16834	123	5000	137	400 W
HBS-24L-40K-UL	61131	27421	140	4000	195	1000 W
HBS-24L-50K-UL	61132	27860	142	5000	194	1000 W
HB-28L-30K-UH	60419	27692	127	3000	217	1000 W
HB-28L-30K-UL-MW	61686	29199	132	3000	222	1000 W
HB-28L-40K-UH	52410	28676	124	4000	232	1000 W
HB-28L-40K-UL	52050	28333	122	4000	232	1000 W
HB-28L-40K-UL-MW	61687	29703	134	4000	222	1000 W
HB-28L-50K-UH	52411	28676	124	5000	232	1000 W
HB-28L-50K-UH-IND	60560	29191	129	5000	217	1000 W
HB-28L-50K-UL	52051	28812	123	5000	234	1000 W
HB-28L-50K-UL-MW	61688	29955	135	5000	222	1000 W
HBS-28L-35K-UL	61115	27212	125	3500	217	1000 W

LB - Lowbay HB - Highbay

Ex. (LB) Lowbay - (8L) 8,000 Lumens - (40K) 4,000 Kelvin - (UL) Universal Voltage 120-277V

Features

- L70 >60,000 hours
- Polycarbonate to reduce glare
- Power factor: ≥0.99
- Instant on to full brightness
- Wide light distribution
- CRI >80
- 0-10V DC dimming standard
- Input voltage: 120-277V or 347-480V

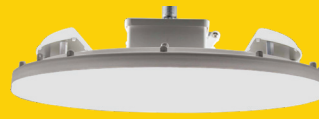
- Workable voltage: 90-305V or 180-528V
- Operating temp: -40°C to +60°C / -40°F to +140°F
- Dimensions: 21.6" x 21.6" x 5.2"
- UL, DLC, RoHS, NSF, and FCC certified
- IP65 rated for wet locations
- Lightweight for easy installation
- 7-year warranty
- DLC Premium listed except HBS-18 and HBS- 28L

Applications

- Warehouses
- Retail stores
- Convention centers
- Manufacturing plants
- Parking garages
- Healthcare facilities
- Food-processing facilities



Low/Highbays Up/Down



Reference: 61061

Model #	Ref#	Lumens	LmW	Color Temp (°K)	Watt	HID Equivalent
LBP-11L-40K-UL	61061	13000	130	4000	100	250 W
LBP-11L-50K-UL	61062	11000	110	5000	100	250 W
LBPS-11L-40K-UL	61088	12145	116	4000	104	250 W
LBPS-11L-50K-UL	61089	12323	118	5000	104	250 W
HBP-18L-40K-UL	61063	18000	130	4000	138	400 W
HBP-18L-50K-UL	61064	18000	110	5000	164	400 W
HBPS-18L-40K-UL	61090	15147	110	4000	138	400 W
HBPS-18L-50K-UL	61091	15418	112	5000	138	400 W
HBP-24L-40K-UL	61065	26878	110	4000	220	750 W
HBP-24L-50K-UL	61066	24000	110	5000	218	750 W
HBPS-24L-40K-UL	61092	23316	112	4000	207	750 W
HBPS-24L-50K-UL	61093	23670	114	5000	207	750 W

Ex. (HBP) Highbay - (18L) 18,000 Lumens - (50K) 5,000 Kelvin - (UL) Universal Voltage 120-277V

Features

- L70 >60,000 hours
- Frosted lens to reduce glare
- Power factor: ≥ 0.99
- 15% Up-light illuminates ceiling and shelving
- Instant on to full brightness

Applications

- Workable voltage: 90-305V or 180-528V
- Operating temp: -40°C to +60°C / -40°F to +140°F
- Dimensions: 21.6" x 21.6" x 5.2"
- UL, DLC, RoHS, and FCC certified
- Retail stores
- Malls

Options

- OC Sensor
- EM
- Cable Suspension

Linear Highbays



Reference: 61075

Model #	Ref#	Lumens	LmW	Color Temp (°K)	Watt	HID Equivalent
HBL-16L-50K-UL	61073	16073	154	5000	104	250 W
HBL-19L-40K-UH	61486	20342	127	4000	160	320 W
HBL-19L-50K-UH	61487	20342	127	5000	160	320 W
HBL-30L-50K-UL	61075	30684	145	5000	211	530 W
HBL-32L-40K-UL	61076	31433	147	4000	213	530 W
HBL-32L-50K-UH	61552	27700	132	5000	209	530 W
HBL-32L-50K-UL	61077	32042	150	5000	214	530 W
HBL-48L-50K-UL	61079	48185	150	5000	322	800 W

Ex. (HBL) Highbay - (19L) 19,000 Lumens - (50K) 5,000 Kelvin - (UL) Universal Voltage 120-277V

Features

- L70 >60,000 hours
- Frosted lens to reduce glare
- Power factor: ≥ 0.99
- Instant on to full brightness
- Wide light distribution
- CRI >80
- 0-10V DC dimming standard
- Input voltage: 120-277V or 347-480V

- Workable voltage: 90-305V or 180-528V
- Operating temp: -40°C to +60°C / -40°F to +140°F
- UL, DLC, RoHS, and FCC certified
- Lightweight for easy installation
- Lower maintenance costs
- Also available in higher CRI
- 7-year warranty
- HBL-16L, HBL-19L, and HBL-30L = 24"
- HBL-32L and HBL-48L = 46"

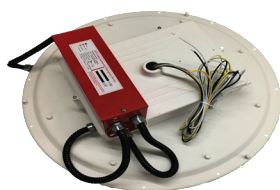
Applications

- Airports
- Stadiums
- Convention centers
- Healthcare facilities
- Manufacturing plants
- Warehouses
- Storage areas
- Retail stores
- Malls

Options

- OC Sensor
- EM

Highbays Accessories



Battery Backup



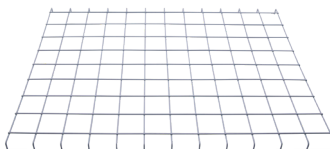
Hook



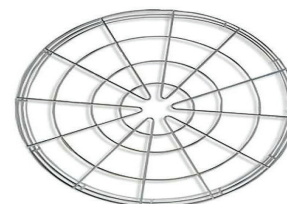
Occupancy Sensor w/ Cable Suspension



Occupancy Sensor (480V available)



Wireguard Linear Highbay

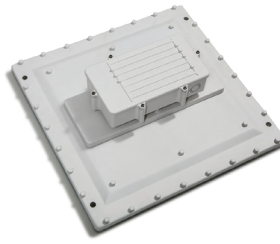


Wireguard Round Highbay

Canopy Fixtures



Mounting Plate



CPAD*



53000*

Model #	Ref#	Lumens	LmW	Color Temp (°K)	Watt	Input Voltage
CP-11L-40K-UL	53000	11549	116	4000	99	120-277 V
CP-11L-50K-UL	53001	11649	117	5000	100	120-277 V
CMP	61453					

Ex. (CP) Canopy - (11L) 11,000 Lumens - (50K) 5,000 Kelvin - (UL) Universal Voltage 120-277V
 *Recessed • AD: Attached Drive • PR: 3/4" Pipe Remote Mount

Features

- Surface mount fixture or semi-recessed as shown
- Superior heat management yields 60,000 hours life
- Lower maintenance costs
- Available 4000K and 5000K color temperatures
- L70 >60,000 hours
- Frosted lens to reduce glare
- Power factor: ≥ 0.99
- Instant on to full brightness
- 0-10V dimming standard
- Operating temp: -40°C to $+60^{\circ}\text{C}$ / -40°F to $+140^{\circ}\text{F}$
- Input voltage: 120-277V
- Workable voltage: 90-305V
- Dimensions CP (125W): 5.51"x 13.70" x 13.70"
- Dimensions CPAD + CPPR: 18.77"x 18.17" x 3.70"
- Driver dimensions: 10" x 6" x 2.25"
- Pending UL, DLC, RoHS and FCC certification
- NSF Certified Splash zone/Non-food zone
- IP65 rated for wet locations
- Title 24 compliant
- LM 79/80 reports available
- Wide light distribution
- CRI >80
- 7-year warranty

Applications

- Gas stations
- Warehouses
- Manufacturing plants
- Entryways and walkways
- Loading docks
- Parking garages
- Indoor/outdoor lighting

Street Lights



Reference: 54103

Model #	Ref#	Lumens	LmW	Color Temp (°K)	Watt	Input Voltage
SLA-5L-40K-UL-PC-DM	54051	3665	116	4000	32	120-277 V
SLA-5L-50K-UH-NPC-ND	54221	3699	118	5000	31	120-277 V
SLA-8L-40K-UL-PC-DM	54052	7464	120	4000	62	120-277 V
SLA-8L-50K-UL-PC-DM	54105	7716	128	5000	60	120-277 V
SLA-8L-50K-UH-NPC-ND	54222	7729	128	5000	60	120-277 V
SLA-10L-40K-UL-PC-DM	54053	9563	123	4000	77	120-277 V
SLA-10L-50K-UL-PC-ND	54132	9886	132	5000	75	120-277 V
SLA-10L-50K-UL-PC-DM	54106	9886	132	5000	75	120-277 V
SLA-10L-50K-UL-PC-DM-DB	60348	9886	132	5000	75	120-277 V
SLA-10L-50K-UH-NPC-ND	54223	10137	132	5000	77	120-277 V
SLA-11L-40K-UL-PC-DM	54054	10942	121	4000	90	120-277 V
SLA-11L-50K-UL-PC-DM	54107	11418	127	5000	90	120-277 V
SLA-11L-50K-UL-PC-ND	54133	11418	127	5000	90	120-277 V
SLA-11L-50K-UL-PC-DM-DB	60354	11418	127	5000	90	120-277 V
SLA-11L-50K-UH-NPC-ND	54224	11430	127	5000	90	120-277 V
SLA-16L-30K-UL-NPC-ND	61455	14080	117	3000	120	120-277 V
SLA-16L-40K-UL-PC-DM	64055	14573	121	4000	120	120-277 V
SLA-16L-50K-UL-PC-DM	54108	15224	127	5000	120	120-277 V
SLA-16L-50K-UH-NPC-ND	54225	15224	127	5000	120	120-277 V
SLA-20L-50K-UH-NPC-ND	54225	18712	127	5000	147	120-277 V
SLA-27L-40K-UL-PC-DM	54056	26469	120	4000	220	120-277 V
SLA-27L-50K-UL-PC-DM	54109	27364	124	5000	220	120-277 V
SLA-27L-50K-UL-PC-ND	54135	27364	124	5000	220	120-277 V
SLA-27L-50K-UH-NPC-ND	54227	26530	124	5000	213	120-277 V
SLA-27L-50K-UL-PC-ND-DB	60350	27364	124	5000	220	120-277 V

Ex. (SLA) Street Light - (27L) 27,000 Lumens - (50K) 5,000 Kelvin - (T3) Type 3 - (UL) Universal Voltage 120-277 V - (UH) Voltage 347-480V - (SL) Silver - (PC) Photocell Option - (DM) Dimming - (ND) None Dimming

Features	Applications
<ul style="list-style-type: none"> • Polycarbonate-lensed optics provide superior light distribution • Power Factor: ≥ 0.99 • Instant on to full brightness • CRI >70 • 0-10V dimming standard • LM 79/80 AND TM-21 reports available • Operating Temp: -40°F to $+140^{\circ}\text{F}$ / -40°C to $+60^{\circ}\text{C}$ (Rh 10-95%) • Storage Temp: -4°F to $+120^{\circ}\text{F}$ / -20°C to $+48.8^{\circ}\text{C}$ (Rh 10-95%) • Storage Temp: -4°F to $+120^{\circ}\text{F}$ / -20°C to $+48.8^{\circ}\text{C}$ (Rh 10-95%) • Input voltage: 120-277V or 347-480V • Workable voltage: 90-305V or 180-528V • Dimensions (HxWxL): 3.4" x 11.4" x 13.4-29.3" • Weight: 8-20 lbs 	<ul style="list-style-type: none"> • Wind and salt spray resistant • ETL, RoHS, and FCC certified • IP65 rated for wet locations • 10kV surge protection • Easy installation • Photocell option available • Easy-access panel • Sleek, modern design is both aesthetic and functional • Light gray color standard (other colors available) • 2 3/8" slipfitter standard, (consult ALSET LED for other mounting options) • 7-year limited warranty • Glare shield available
	<ul style="list-style-type: none"> • Roadways • Industrial parks • Outdoor parking structures • Area and perimeter lighting

Flood Lights

Reference: 52203



Model #	Ref#	Lumens	LmW	Color Temp (°K)	Watt	Input Voltage
FL-3L-45K-A3-DB-UL	60298	3124	99	4500	32	120-277 V
FL-3L-50K-A3-UL-SL	52203	3124	99	5000	32	120-277 V
FL-5L-50K-A3-UL-SL	52204	4926	99	5000	50	120-277 V
FL-8L-50K-A3-UL-SL	52205	7834	98	5000	80	120-277 V
FL-10L-50K-A3-UL-SL	52206	9954	100	5000	100	120-277 V
FL-15L-50K-A3-UL-SL	52207	14476	104	5000	139	120-277 V
FL-22L-50K-A3-UL-SL	52208	21667	102	5000	213	120-277 V
FL-29L-50K-A3-UL-SL	52209	28666	102	5000	282	120-277 V
FL-29L-50K-UH	61326	28666	102	5000	281	120-277 V
FL-40L-50K-A3-UL-SL	52210	40630	100	5000	405	120-277 V
FL-60L-50K-A3-UL-SL	52211	59145	96	5000	614	120-277 V
FL-60L-40K-UH	61652	59128	96	4000	614	120-277 V
FLA-10L-50K-A3-UL-SL	52200	11102	124	5000	89	120-277 V
FLA-15L-50K-A3-UL-SL	52201	15914	128	5000	125	120-277 V
FLA-20L-50K-A3-UL-SL	52202	28123	128	5000	219	120-277 V

Ex. (FL) Flood - (60L) 60,000 Lumens - (50K) 5,000 Kelvin - (A3) Beam Angle - (UL) Universal Voltage 120-277V

Features

- Polycarbonate lens and discrete LED optics provide superior light distribution
- Power factor: ≥ 0.99
- Instant on to full brightness
- 0-10V dimming standard
- LM 79/80 and TM-21 reports available
- Operating temp: -30°C to $+50^{\circ}\text{C}$ / -22°F to $+122^{\circ}\text{F}$
- Input voltage: 120-277V or 347-480V
- Workable voltage: 90-305V or 180-528V
- ETL, DLC, RoHS, and FCC certified
- IP65 rated for wet locations
- 10kV surge protection
- Revolutionary heat sink design for superior heat management
- 7-year warranty

Options

- Glare shield
- Dimming capability
- Tenon mount
- Slipfitter mount
- Photocell with motion detection

Applications

- Sports lighting
- Parking lots
- Landscape illumination
- Signage



Reference: 52209

Parking Lot Lights

Reference: 54036



Model #	Reference #	Lumens	Lumens Per Watt	Color Temp (K)	Watts	Input Voltage
PL-9L-40K-T3-B-UL	54035B	9315	95	4000	98	120-277 V
PL-27L-40K-B-UL	54038B	27360	93	4000	292	120-277 V
PLA-11L-40K-UL	54020	12262	122	4000	100	120-277 V
PLA-25L-50K-UL	54028	26698	115	5000	232	120-277 V

Ex. (PL) Parking Lot - (14L) 14,000 Lumens - (40K) 4,000 Kelvin - (T3) Type 3 - (AA) Adapter - (UL) Universal Voltage 120-277V - (DB) Dark Bronze

Features	Applications
<ul style="list-style-type: none"> • Power factor: ≥ 0.99 • Instant on to full brightness • CRI >70 • 0-10V dimming standard • LM 79/80 and TM-21 reports available • Operating temp: -40°F to $+140^{\circ}\text{F}$ / -40°C to $+60^{\circ}\text{C}$ • Input voltage: 120-277V or 347-480V • Workable voltage: 90-305V or 180-528V • Weight: 11-20 lbs • Square pole or 2 $\frac{3}{8}$" tenon • Dark bronze color standard 	<ul style="list-style-type: none"> • ETL, DLC, RoHS, and FCC certified • Rated for wet locations • 10kV surge protection standard • Photocell optional • Lightweight for easy installation • Consult ALSET LED for mounting options • 7-year warranty • PLA = Improved efficiency • AA adapter - adjustable knuckle adapter • AB adapter - straight mount adapter
	<ul style="list-style-type: none"> • Roadways • Parking lots • Pathways

New Parking Lot/Wall Pack

Pole



Reference: 61427

Model #	Ref#	Lumens	LmW	Color Temp (°K)	Watt	Input Voltage
PLSN-8L-XXK-UL-Y-DB	**	8474	141	40K or 50K	80	120-277 V
PLSN-11L-XXK-UL-A-DB*	**	12412	138	40K or 50K	90	120-277 V
PLSN-11L-XXK-UL-D-DB*	**	12412	138	40K or 50K	89	120-277 V
PLSN-11L-XXK-UL-Y-DB	**	12412	138	40K or 50K	90	120-277 V
PLSN-19L-40K-UH-D-DB	61407	18786	130	40K	145	120-277 V
PLSN-19L-XXK-UH-Y-DB	**	18786	130	40K or 50K	145	120-277 V
PLSN-19L-XXK-UL-A-DB*	**	19355	130	40K or 50K	149	120-277 V
PLSN-19L-XXK-UL-D-DB*	**	19355	130	40K or 50K	149	120-277 V
PLSN-19L-XXK-UL-Y-DB	**	19355	130	40K or 50K	149	120-277 V
PLSN-25L-XXK-UL-A-DB	**	25202	137	40K or 50K	183	120-277 V
PLSN-25L-XXK-UL-D-DB	**	25202	137	40K or 50K	183	120-277 V
PLSN-25L-XXK-UL-Y-DB	**	25202	137	40K or 50K	183	120-277 V
PLSN-32L-XXK-UH-Y-DB	**	31295	128	40K or 50K	244	120-277 V
PLSN-32L-XXK-UL-Y-DB	**	31295	128	40K or 50K	244	120-277 V
PLSN-32L-40K-UH-D-DB	61524	31295	128	40K	244	120-277 V
PLSN-32L-40K-UL-D-DB	61427	31295	128	40K	244	120-277 V
PLSN-40L-40K-UL-D-DB	61617	39390	127	40K	308	120-277 V
PLSN-40L-40K-UL-Y-DB	61618	39390	127	40K	308	120-277 V
PLSN-40L-XXK-UH-A-DB	**	38717	132	40K or 50K	294	120-277 V
PLSN-40L-XXK-UH-D-DB	**	38717	132	40K or 50K	294	120-277 V
PLSN-40L-XXK-UH-Y-DB	**	38717	132	40K or 50K	294	120-277 V
PLSN-40L-XXK-UL-A-DB	**	39390	127	40K or 50K	308	120-277 V
AP-1 (Adapter for round pole for 25L, 32L, and 40L)	61662					

NOTES:

- 1) XXK= 40K or 50K
- 2) *= Dark Bronze or Black
- 3) **= Contact ALSET for Reference number
- 4) PLSN-8L, 11L, and 19L in Direct Mounting configuration have both flat and round pole adapters included.

Ex. (PLSN) New Parking Lot - (25L) 25,000 Lumens - (50K) 5,000 Kelvin - (UL) Universal Voltage 120-277V- optional 347-480V(UH)
 D = Direct Straight Mount Bracket - A = Adjustable Knuckle Mount Bracket - Y= Yoke Mount Bracket

Features

- Dark Sky Compliant
- Power factor: 0.9
- Instant on to full brightness
- CRI >80
- LM 79/80 and TM-21 reports available
- 150*85 degree lens angle
- Input voltage: 120-277V or 347-480V
- Workable voltage: 90-305V or 180-528V

- UL, DLC, RoHS, and FCC certified
- IP65 rated for wet locations
- 7-year warranty
- Optional photocell and surge protection function
- Matches Wall Pack WPSN Series
- Standard color is Black - Dark bronze and silver available
- Must be ordered as either direct pole mount or adjustable 2 3/8" slipfitter knuckle

Applications

- Roadways
- Parking lots
- Pathways

New Wall Pack

Same Housing as New Parking Lot

Reference: 61176



Model #	Ref#	Lumens	LmW	Color Temp (°K)	Watt	Input Voltage
WPSN-7L-40K-UL	60567	7320	119	4000	60	120-277 V
WPSN-7L-50K-UL	61173	7424	121	5000	62	120-277 V
WPSN-7L-57K-UL	61174	7498	122	5700	61	120-277 V
WPSN-9L-40K-UL	60568	10232	127	4000	80	120-277 V
WPSN-9L-50K-UL	61176	10380	129	5000	81	120-277 V
WPSN-9L-57K-UL	61177	10528	131	5700	80	120-277 V
WPSN-12L-40K-UL	60569	12251	122	4000	100	120-277 V
WPSN-12L-50K-UL	61179	12374	123	5000	100	120-277 V
WPSN-12L-57K-UL	61180	12496	124	5700	100	120-277 V
WPSN-13L-40K-UL	60570	14190	115	4000	123	120-277 V
WPSN-13L-50K-UL	61128	14332	116	5000	123	120-277 V
WPSN-13L-57K-UL	61183	14473	117	5700	123	120-277 V

Ex. (WPSN) New Wall Pack - (13L) 13,000 Lumens - (50K) 5,000 Kelvin - (UL) Universal Voltage 120-277V

Features

- Instant on to full brightness
- IP65 rated

- UL, DLC, RoHS and FCC certified
- Workable voltage: 120-277V

Applications

- Sports venues
- Industrial settings
- Warehouses

Mini Wall Pack

Reference: 61137



Model #	Ref#	Lumens	LmW	Color Temp (°K)	Watt	Input Voltage
WPSN-1L-50K-UL	61136	1200	92	5000	13	120-277 V
WPSN-2L-40K-UL	61137	1700	85	4000	20	120-277 V
WPSN-2L-50K-UL	61138	1700	85	5000	20	120-277 V

Ex. (WPSN) New Wall Pack - (1L) 1,000 Lumens - (50K) 5,000 Kelvin - (UL) Universal Voltage 120-277V

Features

- Suitable for mounting 10' to 12'
- Power Factor: >0.8
- Instant on to full brightness
- CRI >80
- Photocell included
- LM 79/80 and TM-21 reports available
- Operating temp: -20°C to +45°C / -4°F to +115°F

- Rated for wet locations
- Dimensions: 10.66" x 5.90" x 2.60"
- 5-year warranty
- No DLC certification
- Black housing standard
- Input voltage: 120-277V
- Workable voltage: 90-305V

Applications

- Entrance/Exit doors
- Warehouses

Wall Packs

Reference: 53055



Model #	Ref#	Lumens	LmW	Color Temp (°K)	Watt	Input Voltage
WP-6L-55K-UL	53506	5608	68	5500	83	120-277 V
WP-9L-50K-UL	53507	8137	68	5500	119	120-277 V
WPA-7L-50K-UL	53500	6896	114	5000	60	120-277 V
WPA-9L-50K-UL	53501	9189	117	5000	79	120-277 V
WPA-11L-50K-UL	53502	11530	116	5000	100	120-277 V
WPA-17L-50K-UL	53504	18568	100	5000	157	120-277 V

Ex. (WP) Wall Pack - (10L) 10,000 Lumens - (50K) 5,000 Kelvin - (UL) Universal Voltage 120-277V

Features

- Polycarbonate double-sided lens for superior light distribution
- Power factor: ≥ 0.99
- Instant on to full brightness
- LM 79/80 and TM-21 reports available
- Operating temp: -20°C to +50°C / -4°F to +122°F
- Input voltage: 120-277V or 347-480V
- Workable voltage: 90-305V or 180-528V
- ETL, DLC, RoHS, and FCC certified
- IP65 rated for wet locations
- Photocell option available
- Black color standard
- Forward throw and downlight design for maximum light coverage
- 7-year warranty
- 480V available on some models

Applications

- Sports stadiums
- Architectural settings
- Warehouse
- Industrial settings
- Parking structures
- Pathways

EZ HID Retrofit Solution

Reference: 60893



Model #	Ref#	Lumens	LmW	Color Temp (°K)	Watt	Input Voltage
SNRK-13L-40K-UL-DM	60708	11695	114	4000	102	120-277 V
SNRK-13L-50K-UL-DM	60893	11695	114	5000	103	120-277 V
SNRK-19L-50K-UL-DM	60895	18709	123	5000	152	120-277 V
SNRK-19L-40K-UL-DM	60710	18709	123	4000	152	120-277 V
SNRK-30L-50K-UL-DM	60897	28013	118	5000	237	120-277 V

Ex. (SNRK) EZ HID - (25L) 25,000 Lumens - (50K) 5,000 Kelvin - (UL) Universal Voltage 120-277V

Features

- Direct replacement for HID fixture
- Power factor: ≥ 0.9
- Instant on to full brightness
- Workable voltage: 90-305V or 180-528V
- 0-10V dimming standard
- UL, DLC, RoHS, and FCC certified
- Flexible mounting bracket

Applications

- Canopy
- Highbay
- Bollards
- Outdoor shoe box and cobra head



Hazardous Location Fixtures

Reference: 61457



Model #	Ref#	Lumens	LmW	Color Temp (°K)	Watt	Input Voltage
HLNB-9L-50K-UL-NPT	61457	9750	150	5000	65	120-277 V
HLNB-9L-50K-UL-STA	61636	9750	150	5000	65	120-277 V
HLNB-251	61634	25-degree stanchion mount bracket				

Ex. (HLN) Hazardous Light - (10L) 10,000 Lumens - (50K) 5,000 Kelvin - (UL) Universal Voltage 120-277V

Features HLN	Features HLN B
<ul style="list-style-type: none"> • Rugged die-cast aluminum construction • IP66 rated for high ingress protection • Operation temperature: -40°C to 60°C / -40°F to 140°F • Sealed fixture for Class I Division 2 Hazardous Location Group A, B, C & D • Mounting options available • Tempered glass lens • Power factor: ≥0.95 • Instant on to full brightness • Corrosion-proof grade - WF2 • IK Rating - IK08 • Operating temp: -40°C to +60°C / -40°F to +140°F • Input voltage: 120-277V • Workable voltage: 90-305V • UL, DLC Premium, RoHS, and FCC certification 	<ul style="list-style-type: none"> • Rugged die-cast aluminum construction • IP66 rated for high ingress protection • Sealed fixture for Class I Division 2 Hazardous Location Group A, B, C, & D Class II Division 1, Group E, F, G Class III Division 1 • UL, DLC Premium Certified • Up to 150 Lm/W • 7-year warranty
	<h3>Applications</h3> <ul style="list-style-type: none"> • Oil refineries • Steel mills • Petrochemical plants • Wastewater treatment • Manufacturing plants

ALSET LED WARRANTY

5-YEAR LIMITED WARRANTY

NuWave, LLC warrants that this luminaire, when purchased new and in its original packaging, will be free from defects in material and workmanship and is guaranteed to last 5 years from the date of original purchase.

If this product does not conform to the warranty or guarantee, NuWave, LLC, at its discretion, will send you a replacement luminaire or refund your purchase price upon presentation of purchase receipt and your return of the luminaire, excluding shipping and handling, and labor costs.

Warranty and guarantee are void if product is subject to, but not limited to: accidents, acts of God, neglect, abuse or misuse, vandalism, improper installation, modification, power surges, faulty service by persons other than the seller or their authorized service provider, or misuse per caution statement (see caution statement on product package). NuWave, LLC shall make the final determination of product suitability or defect. This warranty shall be void if product is used for purposes other than those for which it was designed.

For warranty or other questions, please call 877-689-2573 or visit the website www.ALSETLED.com.

REPLACEMENT OR REFUND IS THE SOLE REMEDY AVAILABLE, IN LIEU OF ALL OTHER WARRANTIES, EXPRESS OR IMPLIED, INCLUDING ANY WARRANTY OF MERCHANTABILITY OR FITNESS FOR A PARTICULAR PURPOSE.

INCIDENTAL AND CONSEQUENTIAL DAMAGES ARE HEREBY EXPRESSLY EXCLUDED. The above limitation or exclusion may not be applicable to you if exclusion or limitation of incidental or consequential damages is prohibited by your state. This warranty gives you specific legal rights, and you may also have other rights which vary from state to state.

7-YEAR LIMITED WARRANTY

NuWave, LLC warrants that this luminaire, when purchased new and in its original packaging, will be free from defects in material and workmanship and is guaranteed to last 7 years from the date of original purchase.

If this product does not conform to the warranty or guarantee, NuWave, LLC, at its discretion, will send you a replacement luminaire or refund your purchase price upon presentation of purchase receipt and your return of the luminaire, excluding shipping and handling, and labor costs.

Warranty and guarantee are void if product is subject to, but not limited to: accidents, acts of God, neglect, abuse or misuse, vandalism, improper installation, modification, power surges, faulty service by persons other than the seller or their authorized service provider, or misuse per caution statement (see caution statement on product package). NuWave, LLC shall make the final determination of product suitability or defect. This warranty shall be void if product is used for purposes other than those for which it was designed.

For warranty or other questions, please call 877-689-2573 or visit the website www.ALSETLED.com.

REPLACEMENT OR REFUND IS THE SOLE REMEDY AVAILABLE, IN LIEU OF ALL OTHER WARRANTIES, EXPRESS OR IMPLIED, INCLUDING ANY WARRANTY OF MERCHANTABILITY OR FITNESS FOR A PARTICULAR PURPOSE.

INCIDENTAL AND CONSEQUENTIAL DAMAGES ARE HEREBY EXPRESSLY EXCLUDED. The above limitation or exclusion may not be applicable to you if exclusion or limitation of incidental or consequential damages is prohibited by your state. This warranty gives you specific legal rights, and you may also have other rights which vary from state to state.

LIMITED WARRANTY-STREET/PARKING LOT LUMINAIRES

NuWave, LLC warrants that this luminaire, when purchased new and in its original packaging, will be free from defects in material and workmanship and is guaranteed to last 7 years from the date of original purchase.

If this product does not conform to the warranty or guarantee, NuWave, LLC, at its discretion, will send you a replacement luminaire or refund your purchase price upon presentation of purchase receipt and your return of the luminaire, excluding shipping and handling, and labor costs.

Warranty and guarantee are void if product is subject to, but not limited to: accidents, acts of God, neglect, abuse or misuse, vandalism, improper installation, modification, power surges, faulty service by persons other than the seller or their authorized service provider, or misuse per caution statement (see caution statement on product package). NuWave, LLC shall make the final determination of product suitability or defect. This warranty shall be void if product is used for purposes other than those for which it was designed.

For warranty or other questions, please call 877-689-2573 or visit the website www.ALSETLED.com.

REPLACEMENT OR REFUND IS THE SOLE REMEDY AVAILABLE, IN LIEU OF ALL OTHER WARRANTIES, EXPRESS OR IMPLIED, INCLUDING ANY WARRANTY OF MERCHANTABILITY OR FITNESS FOR A PARTICULAR PURPOSE.

INCIDENTAL AND CONSEQUENTIAL DAMAGES ARE HEREBY EXPRESSLY EXCLUDED. The above limitation or exclusion may not be applicable to you if exclusion or limitation of incidental or consequential damages is prohibited by your state. This warranty gives you specific legal rights, and you may also have other rights which vary from state to state.